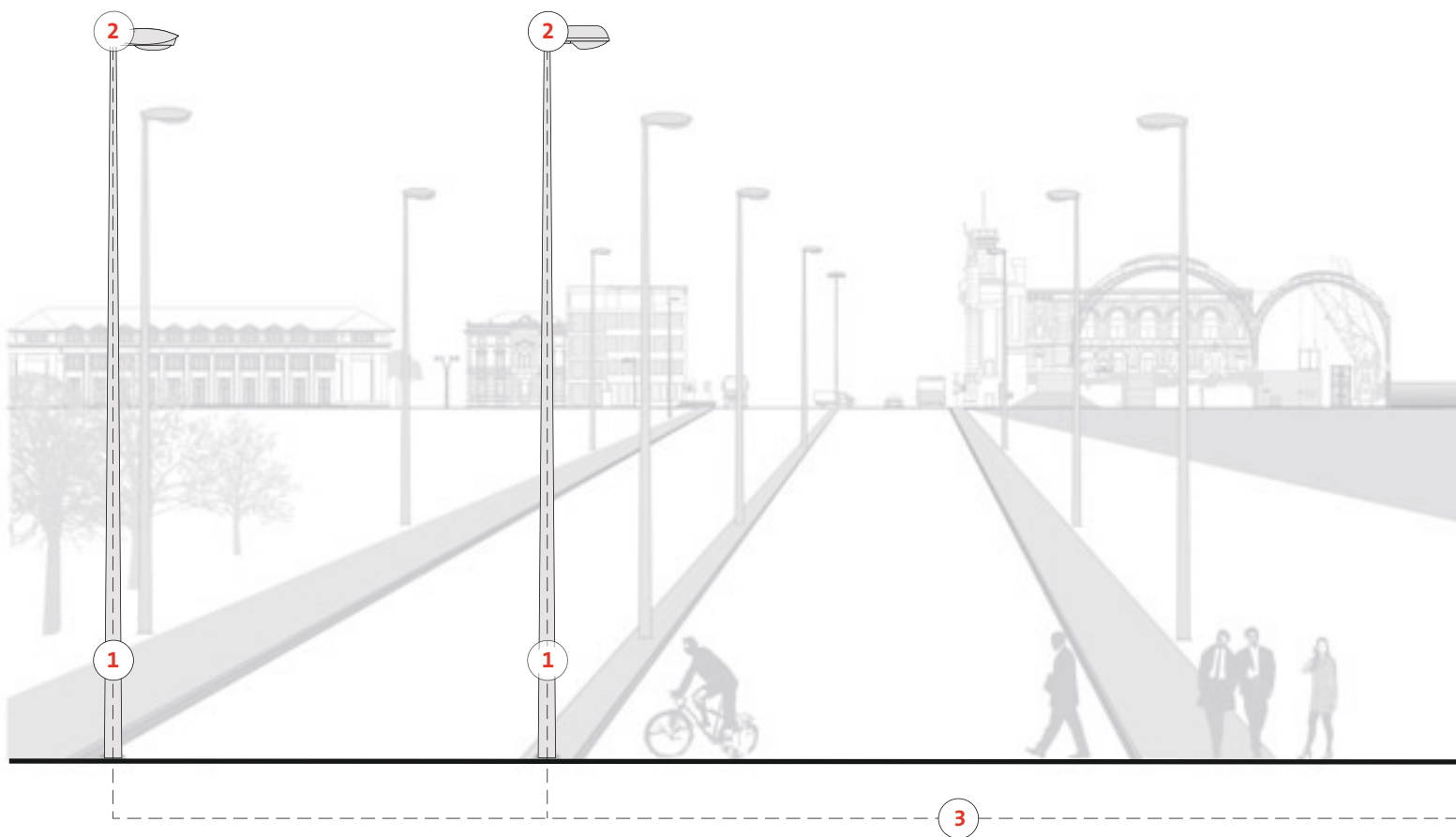


The background features several large, overlapping, light gray curved lines that sweep across the page, creating a sense of motion and depth. These lines are positioned in the upper left, middle left, and lower right areas.

Chapter 8

Lighting Management



1 Luminaire controller

The luminaire controller mounted within the mast is a modularly constructed control component. Information flows via the normal power cable without additional control wires.

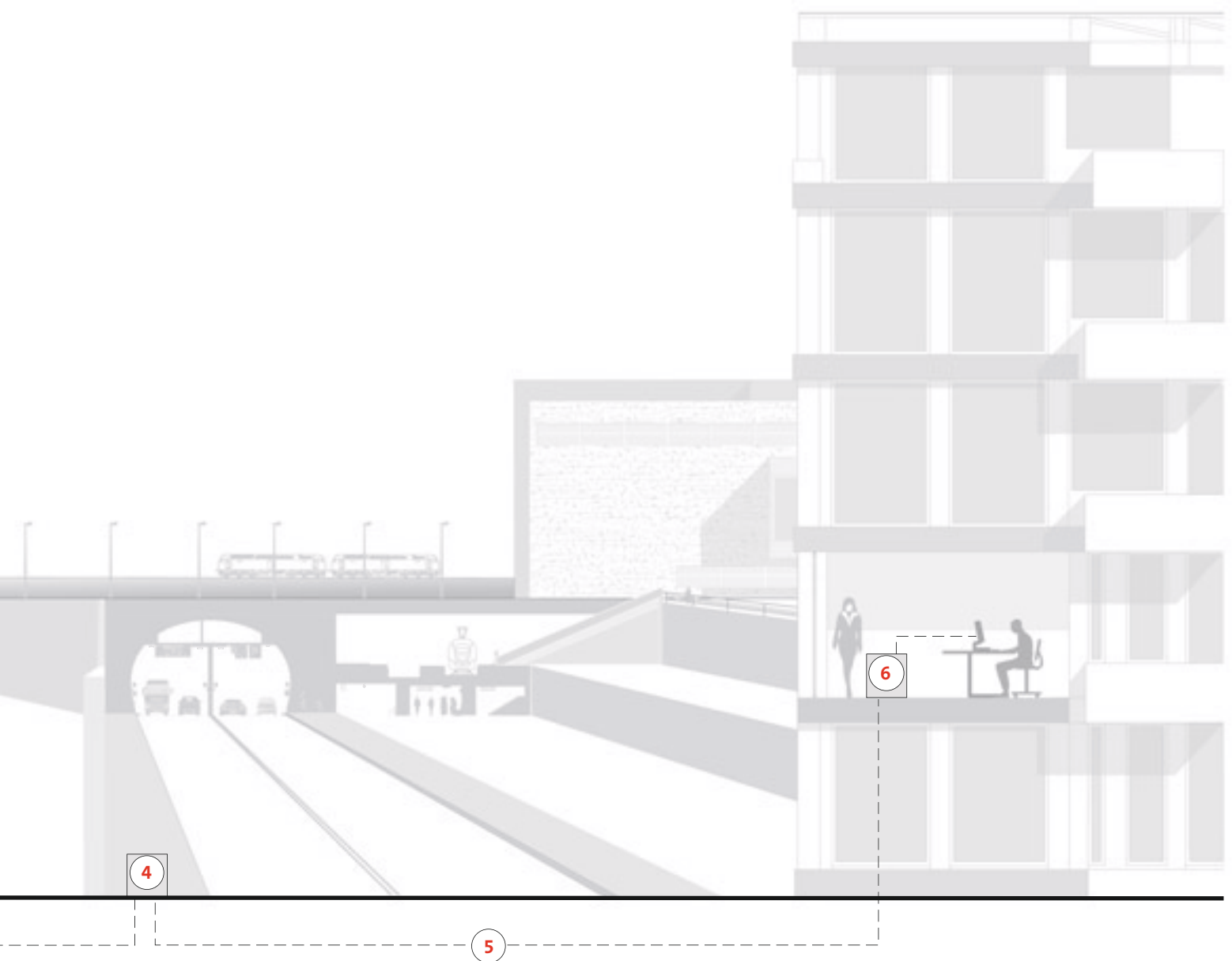
- In the basic configuration the controller can switch the luminaire as a normal ripple control device.
- When used as a LON PowerLine control device the same luminaire controller switches and dims the luminaires. It also records arcing voltage, energy consumption and burning hours of lamps.

2 Ballasts

The integration of luminaires with magnetic ballasts commonly used today and control of reducing relays is problem-free. Equally, luminaires with electronic ballasts or dimmable electronic ballasts can be integrated into the luminaire installation with the luminaire controller. The latter are necessary in order to benefit from the wide spectrum of functionality and advantages offered by an intelligent outdoor lighting management system.

3 PowerLine

PowerLine uses the power supply line as transmission medium between luminaire controller and communication module. Additional control lines are not necessary.



4 Communication module

The communication module integrated within the switch cabinet

- controls the luminaire controller
- collects information from the luminaires and
- routes this information to the central server

5 Transmission to server

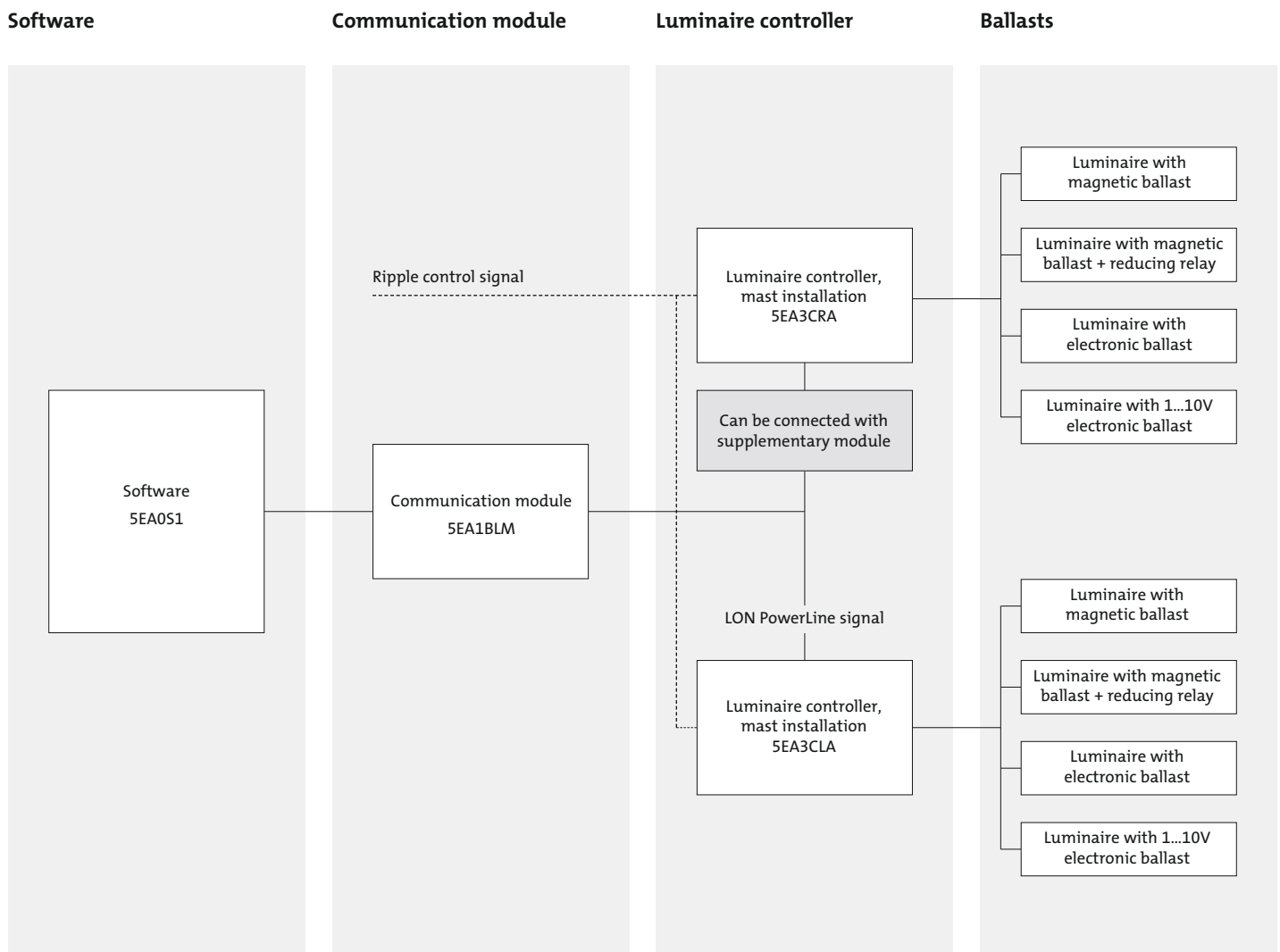
Transmission from the communication module to the server and back occurs on the IP level via GSM/GPRS modem or is wire connected.

6 Central server and user software

The central server stores information and makes the data available for further use. User software is used for programming and monitoring of the lighting installation.



Order Matrix – Components





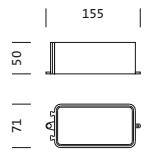
Luminaire controller 5EA3CRA

Luminaire controller for mast installation.
For connecting luminaires with magnetic ballasts, reducing relay, electronic ballast or 1...10V electronic ballast. Control via ripple control signal.



Description

Luminaire controller¹⁾



Order No.

5EA3CRA

1) For control via ripple control technology, additional information concerning the protocol used, pulse pattern, and frequency is required!



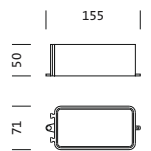
Luminaire controller 5EA3CLA

Luminaire controller for mast installation.
For connecting luminaires with magnetic ballasts, reducing relay, electronic ballast or electronic ballast 1...10V. Control via ripple control signal or via LON PowerLine.



Description

Luminaire controller¹⁾



Order No.

5EA3CLA

1) For control via ripple control technology, additional information concerning the protocol used, pulse pattern, and frequency is required!



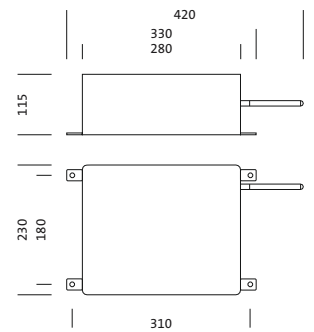
Communication module

Wall mounted communication module. The luminaire is controlled via LON PowerLine, connection to the central facility occurs via GSM/GPRS modem using XML/SOAP.
Alternative use of cable transmission on request.



Description

Communication module, wall mounted



Order No.

5EA1BLM



Management software

The control parameters of the outdoor lighting installation are set, alarm rules for monitoring are generated and the entire system is visualised with the management software.

Description

Management software for small installations (80 luminaire controllers)

Order No.

5EA0S1

