



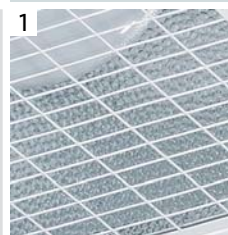
features: compact reflector luminaire for surface mounting | wide beam, symmetrical or asymmetrical light distribution | rectangular housing | separate mounting plate | control gear compartment and lamp compartment completely separated from each other | protective metal mesh | interior aluminium blade louver | temperature resistant toughened safety glass cover | p.f. corrected, conventional control gear with thermal cut-out facilities | installation friendly, easy accessible construction | for tubular or elliptical metal halide lamps, high pressure sodium lamps and mercury lamps

application: suitable for interior uses as well as for sheltered outdoor installations | recommended mounting height above 5 meters | for factories, warehouses, exhibition halls and other high halls

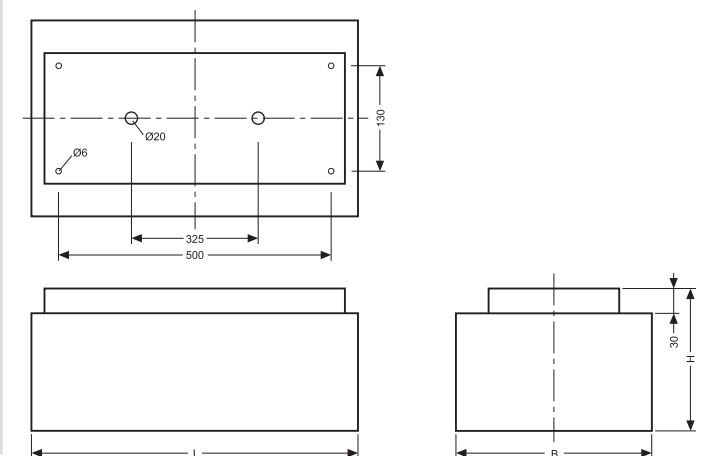
design: housing and mounting plate made of sheet steel | interior and exterior housing pure white powder coated (similar to RAL 9010) | highly specular anodised aluminium structure reflector | cover panel made of temperature resistant toughened safety glass | hinged cover for relamping | control gear compartment accessible through separate cover on bottom of the housing | electrical connection through a plug and socket system | optional with start-up switch and incandescent lamp for the start-up period



Order No.	Description	Lamps	Weight
5NX 761 2-1N	compact, surface mounted reflector luminaire, symmetrical light distribution, complete with control gear, p.f. corrected, IP40, pure white finished	1 x HIT/HST 250W	12.3 kg
5NX 761 2-1V	compact, surface mounted reflector luminaire, symmetrical light distribution, complete with control gear, p.f. corrected, IP40, pure white finished	1 x HIT/HST 400W	12.6 kg
5NX 761 2-1E	compact, surface mounted reflector luminaire, symmetrical light distribution, complete with control gear, p.f. corrected, IP40, pure white finished	1 x HME 250W	12.2 kg
5NX 761 2-1F	compact, surface mounted reflector luminaire, symmetrical light distribution, complete with control gear, p.f. corrected, IP40, pure white finished	1 x HME 400W	12.4 kg
5NX 761 2-1NA	compact, surface mounted reflector luminaire, asymmetrical light distribution, complete with control gear, p.f. corrected, IP40, pure white finished	1 x HIT/HST 250W	12.4 kg
5NX 761 2-1VA	compact, surface mounted reflector luminaire, asymmetrical light distribution, complete with control gear, p.f. corrected, IP40, pure white finished	1 x HIT/HST 400W	12.7 kg
5NX 761 2-1EA	compact, surface mounted reflector luminaire, asymmetrical light distribution, complete with control gear, p.f. corrected, IP40, pure white finished	1 x HME 250W	12.3 kg
5NX 761 2-1FA	compact, surface mounted reflector luminaire, asymmetrical light distribution, complete with control gear, p.f. corrected, IP40, pure white finished	1 x HME 400W	12.5 kg



1. protective metal mesh with tempered safety glass



for limited application, the luminaires are also available for 400W lamps

spare parts:

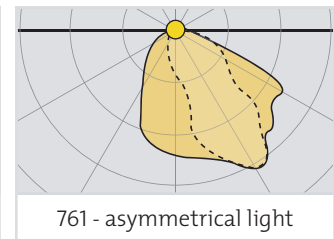
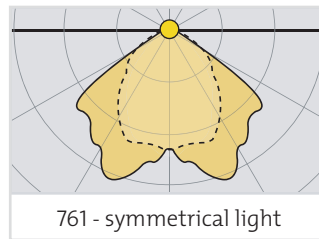
Order No.	Description	Size	Weight
5NX 761 0-0XG	spare glass cover, temperature resistant toughened safety glass	385 x 330 x 5 mm	1.6 kg
5NX 761 0-0XC	spare cover for lamp compartment, sheet steel frame with wire mesh, including glass cover and mounting screws	390 x 335 x 8 mm	1.8 kg

technical data: rated voltage: 230/240V, 50Hz (other voltage available on request)
 ambient temperature: -20°C...+40°C
 protection class: IP 40


installation: surface mounting of the removable mounting plate by four screws max. M8, (screws are not included) | electrical connection by a terminal on the mounting plate | easy attachment of the luminaire to the mounting plate by a hinge system | connection of the luminaire by a plug and socket system | twin cable entry grommet of the mounting plate for through-wiring to adjacent luminaires


service and maintenance: easy access for lamp replacement by opening of the hinged cover panel | access to the gear compartment by a separate hinged cover | easy removable control gear tray

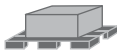
light distribution curve:

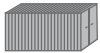


logistic: the luminaires are individually packed in carton boxes | the cartons may be loaded individually or stacked on pallets | the capacity of the containers is based on pallet loading

	carton
620 x 385 x 300 mm (l x w x h)	

	weight
13.0 - 14.0 kg	

	pallet
16 units, 1240 x 800 x 1350 mm (l x w x h)	

	container
20' : 11 pallets, 176 units 40' : 22 pallets, 352 units	